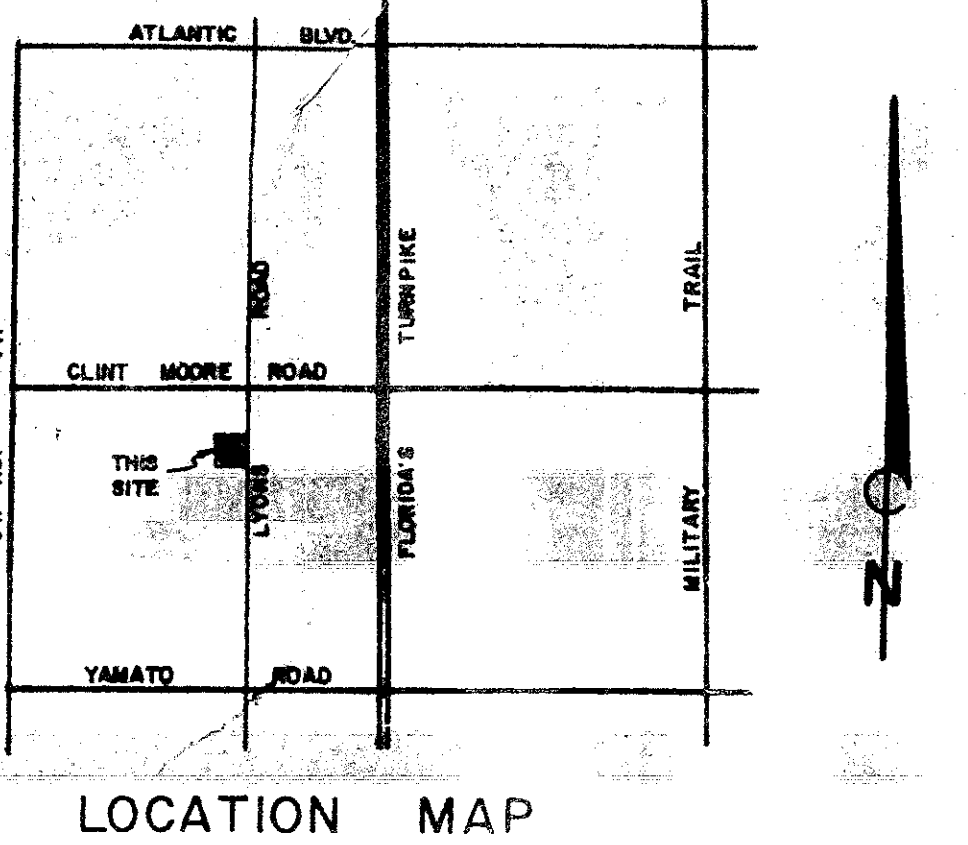


# VILLA PORTOFINO II LONG LAKE VILLAS P.U.D.

BEING A REPLAT OF A PORTION OF BLOCK 73 OF PALM BEACH FARMS COMPANY  
PLAT NO. 3 AS RECORDED IN PLAT BOOK 2, PAGES 45 THROUGH 54  
PUBLIC RECORDS OF PALM BEACH COUNTY, FLORIDA

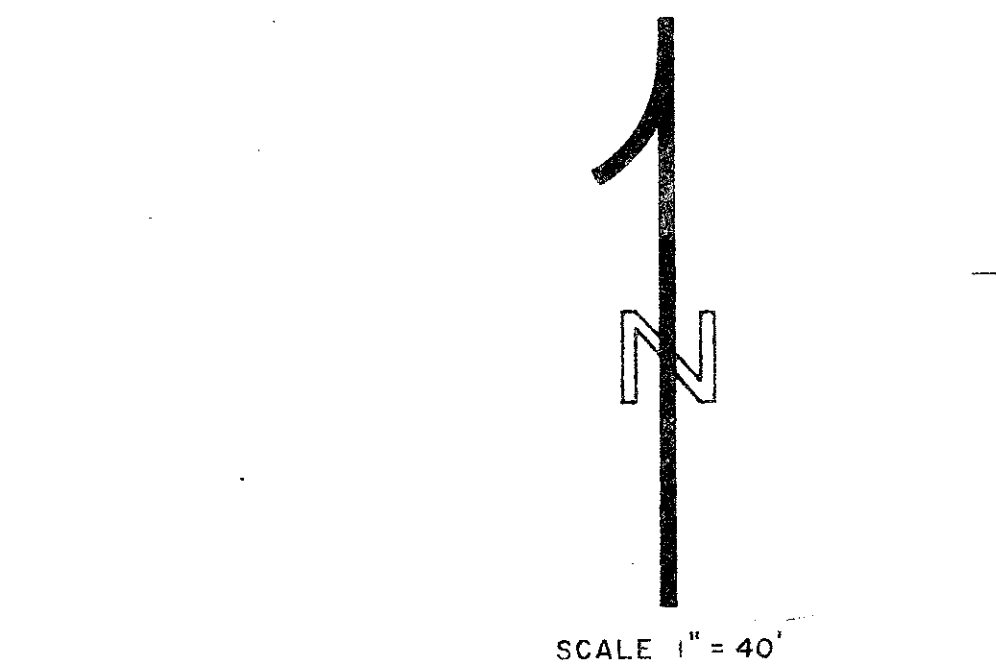


STATE OF FLORIDA  
COUNTY OF PALM BEACH  
THIS PLAT WAS FILED FOR  
RECORD AT \_\_\_\_\_ M.  
THIS \_\_\_\_\_ DAY OF \_\_\_\_\_  
A.D. 1986, AND DULY RECORDED  
IN PLAT BOOK \_\_\_\_\_ ON  
PAGES \_\_\_\_\_ AND \_\_\_\_\_  
BY \_\_\_\_\_  
DEPUTY CLERK

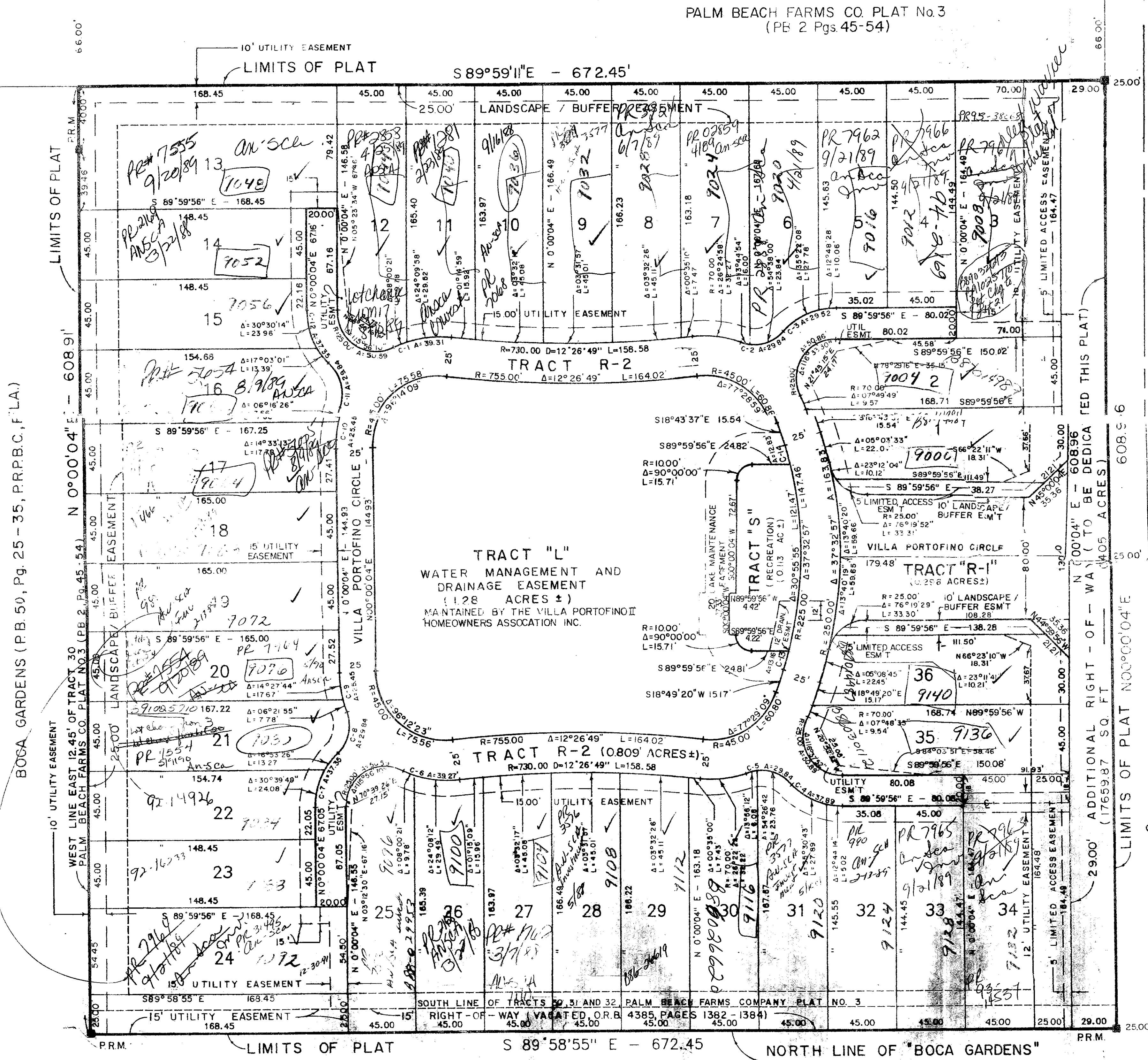
NORTH LINE OF TRACTS 30, 31 AND 32, PALM BEACH FARMS CO. PLAT NO. 3 (PB. 2, Pg. 45-54)

PALM BEACH FARMS CO. PLAT No. 3  
(PB. 2 Pgs 45-54)

SHEET No. 2 OF 2



CURVE	RADIUS	DELTA	LENGTH	TANGENT	CHORD
C1	70.00'	32°10'19"	39.31'	20.19'	38.39'
C2	25.00'	68°22'54"	29.84'	16.98'	28.10'
C3	70.00'	24°09'58"	29.52'	14.99'	29.31'
C4	45.00'	48°14'57"	37.89'	20.15'	36.79'
C5	25.00'	68°22'54"	29.84'	16.98'	28.10'
C6	70.00'	32°10'19"	39.31'	20.19'	38.39'
C7	45.00'	47°33'16"	37.35'	19.83'	36.29'
C8	25.00'	68°22'54"	29.84'	16.98'	28.10'
C9	70.00'	20°45'39"	25.45'	12.86'	25.31'
C10	70.00'	20°49'38"	25.45'	12.86'	25.31'
C11	25.00'	68°22'54"	29.84'	16.98'	28.10'
C12	45.00'	47°33'16"	37.35'	19.83'	36.29'
C13	225.00'	03°21'04"	13.16'	6.58'	13.16'
C14	225.00'	03°15'57"	12.83'	6.41'	12.82'



P.U.D. STATISTICAL DATA

TOTAL AREA THIS PLAT	9.400 AC.
TOTAL AREA LOTS 1-36	6.497 AC.
AREA OF RECREATION TRACT S	0.113 AC.
AREA OF WATER MANAGEMENT TRACTS L	1.28 AC.
AREA OF PRIVATE ROAD R/W TRACT R-1	0.296 AC.
AREA OF INGRESS - EGRESS TRACT R-2	0.809 AC.
ADDITIONAL R/W DEDICATED THIS PLAT	0.405 AC.
TOTAL NUMBER UNITS ALLOWED THIS PLAT	36
TOTAL NUMBER UNITS PROPOSED THIS PLAT	36
DENSITY PROPOSED THIS PLAT	3.830
LAND USE:	SINGLE FAMILY RESIDENCE (ZERO LOT LINE)

LONG LAKE ESTATES PLAT NO. 1  
(PB. 33 PAGES 154-157)

APP. BY [Signature]  
CHECKED BY [Signature]

0486-001

6-47-42  
R/S/POO  
Ans 10  
K5Z

SUBDIVISION: Villa Portofino II  
BOOK: 55  
PAGE: 55  
FLOOD HAZARD MAP: 215A  
QUAD: 53  
SE PJD  
ZIP CODE: 33434  
PUD NAME: Long Lake Villas P.U.D.

VILLA PORTOFINO II

58/55